

LAT: N 46° 14' 03"  
LONG: W 119° 10' 22.1"  
WGS 84

LAT: N 46° 13' 36.5"  
LONG: W 119° 10' 28"  
WGS 84

LAT: N 46° 13' 43.2"  
LONG: W 119° 09' 43.6"  
WGS 84

LAT: N 46° 13' 48.8"  
LONG: W 119° 08' 59.3"  
WGS 84

LAT: N 46° 13' 22.4"  
LONG: W 119° 09' 08.4"  
WGS 84

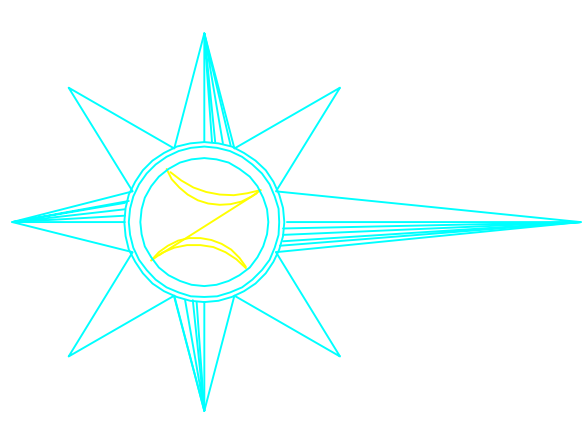
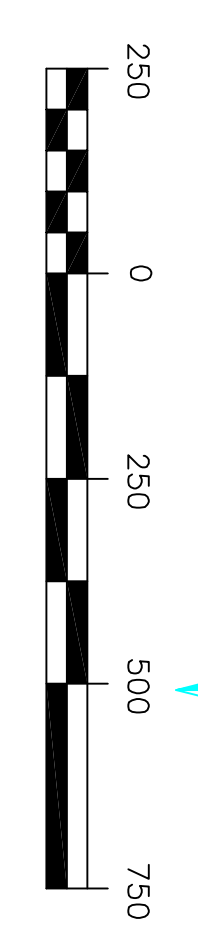
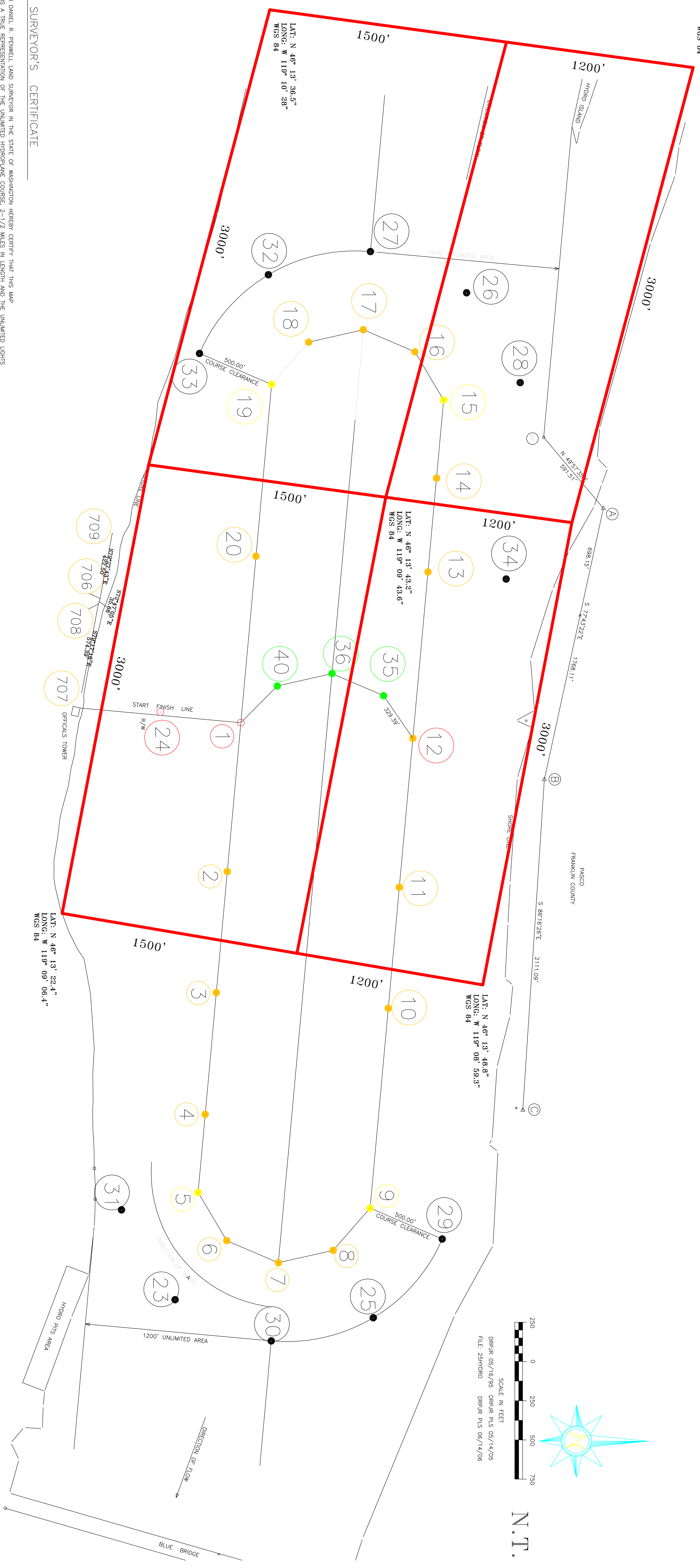
SURVEYOR'S CERTIFICATE

I, DANIEL B. BIRWELL, LAND SURVEYOR IN THE STATE OF WASHINGTON HEREBY CERTIFY THAT THIS MAP IS A TRUE REPRESENTATION OF THE UNLIMITED HYDROPLANE COURSE 2-1/2 MILES IN LENGTH AND THE UNLIMITED LIGHTS COURSE 1-2/3 MILES IN LENGTH IN THE TRIBES-CITIES, WASHINGTON ON THE COLUMBIA RIVER.

KENNEWICK  
BENTON COUNTY  
COLUMBIA PARK

DATE: \_\_\_\_\_  
LS# 38024

2-1/2 MILE UNLIMITED HYDROPLANE COURSE  
AND  
1-2/3 MILE UNLIMITED LIGHTS COURSE



SCALE IN FEET  
DRAWN 05/16/05  
FILE 25HYDRO  
DRAW PLS 05/14/05  
DRAW PLS 05/14/06

N.T.